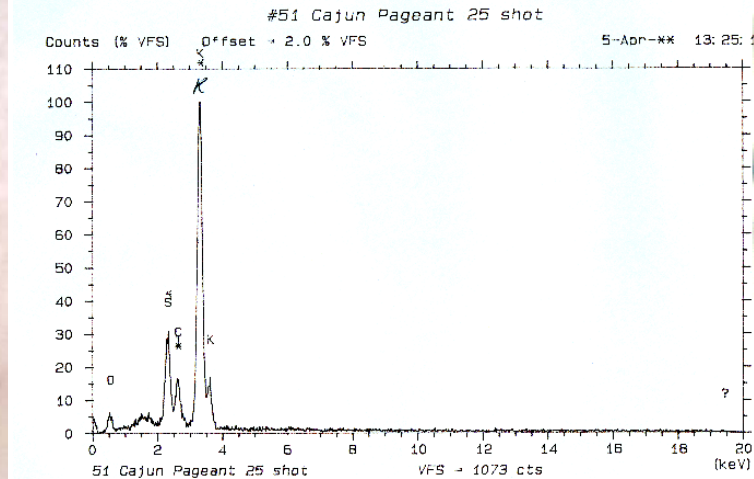
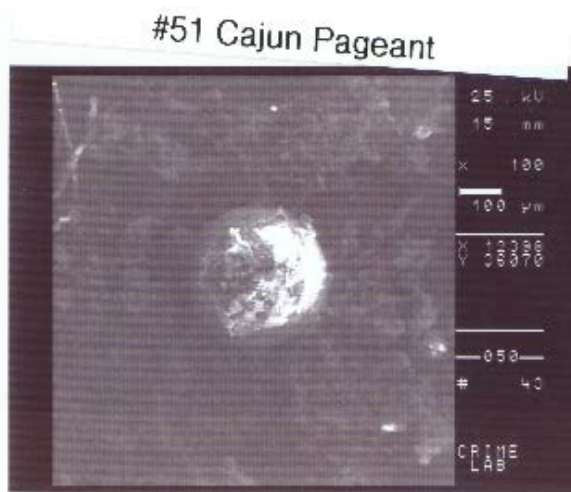




#51 Cajun Pageant 25 shot

25 shot

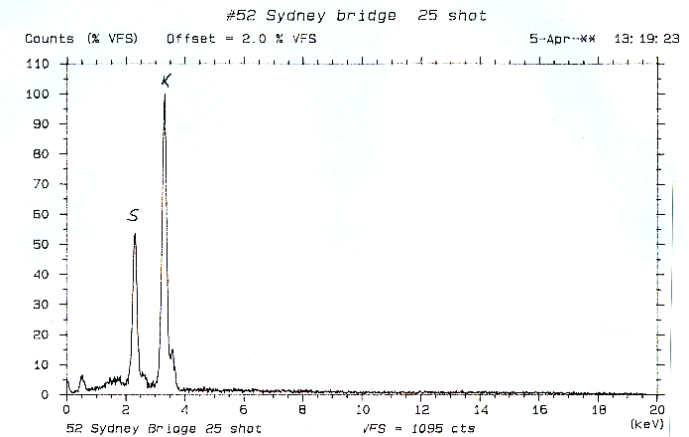
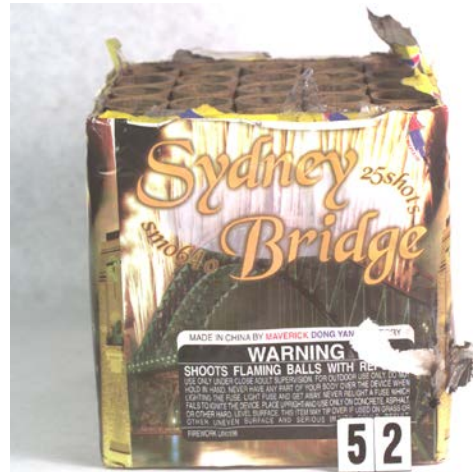
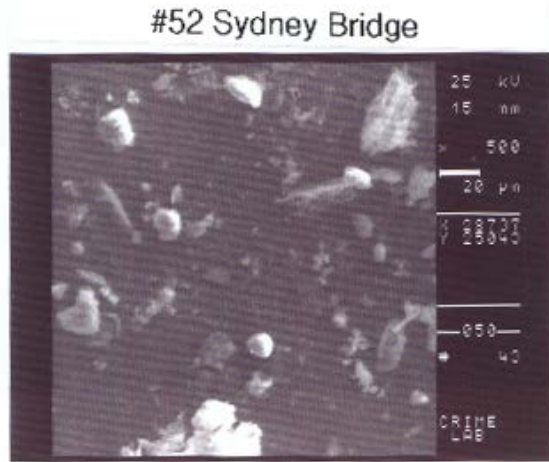


- ☼ **Pyrotechnic effect:**
- ☼ **Contents of unburned device:** yellow=Si,Al,K,Ti,Fe red=Cl,K,Al,Mg,S,K,Ba
purple=Al,Cl,K,Mg,Si,S,K,Ba orange=Si,Al,Mg,K,Cl,Fe,Ti
orange=Si,Al,K,Ca,Fe,Ti,Mg off-white=Si,Al,K,Ti,Fe,Mg
gray1=Ca,Si,Al,K,S,Fe,Ti,Mg gray2=Al,Cl,K,Mg,Sr,Ba,Zn
clear=Si,Mg,Cl,Al,S,Ca black=Al,K,Mg,Cl,Si,S
- ☼ **Automated GSR run of burned residue found:** few Pb,Ba
- ☼ **Morphology BSE/SEM:** nothing significant
- ☼ **Contents of burned residue:** K,S,Cl K,Cl,Si,Mg,S K,S K.Cl Mn,Fe,K,Ca,Ni



#52 Sidney Bridge

25 shot



 **Pyrotechnic effect:**

🌟 **Contents of unburned device:** orange3=Si,Al,Fe,K,Ti,Mg orange2=Si,Al,Fe,K,Ti
orange1=Mg,Al,Pb,K,Ba,Cu gray5=Al,Cl,K,Pb,Ba,K,Si,Fe,Zn
gray4=Cl,K,Sr,Mg,Al,Sr gray3=K,Mg,Al,S,K,Ba,Cl,Cu gray2=Al,K,Cl,S,Ba
gray1=Cl,S,K,Cu black2=K,S,Si,Al,Mg black1=Cl,K,Al,Pb,K,Si,Fe,Zn

 Automated GSR run of burned residue found: none

💣 **Morphology** BSE/SEM: nothing significant

☀ **Contents of burned residue:** Al,Si,K,Fe K,Cl,S,Si,Al K,S Ba,K,S,Cl Pb,K K,S,Si
Fe,Si,Al,K,S



#53 Wheel of Fortune

wheel



- 💣 **Pyrotechnic effect:** Whistles, colored sparks while spinning, five parts
- 💣 **Contents of unburned device:** white=K,Cl orange chunk=Si,Al,Fe,K,Ti gray=Mg,Al,Cl,Ba,K
black=K,Si,Al
- 💣 **Automated GSR run of burned residue found:**
- 💣 **Morphology BSE/SEM:**
- 💣 **Contents of burned residue:**



#54 Wheel of Vegas

wheel



💣 **Pyrotechnic effect:** Whistles, colored sparks while spinning, four parts

💣 **Contents of unburned device:** orange=Si,Al,Mg,K,Fe,Ti off-white=K,Cl,Si
gray1=K,Cl,Sr,K,Mg gray2=Mg,Al,Sr,Cl,K,Ba

💣 **Automated GSR run of burned residue found:**

💣 **Morphology BSE/SEM:**

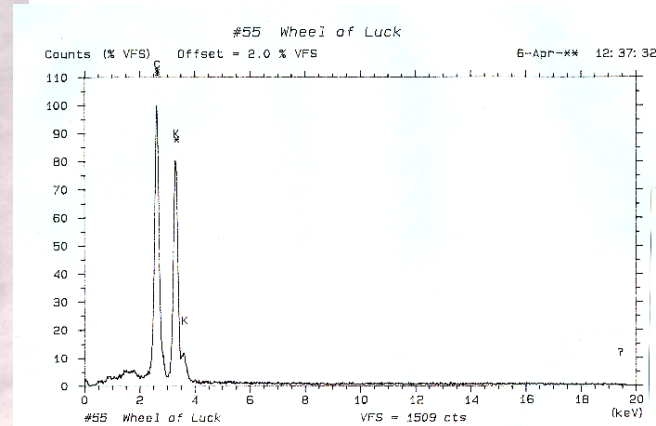
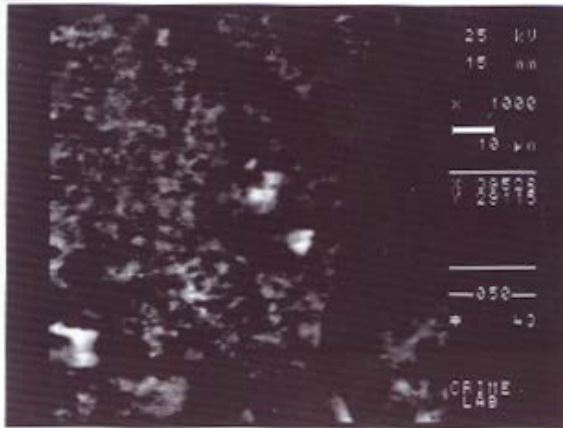
💣 **Contents of burned residue:**



#55 Wheel of Luck

wheel

#55 Wheel of Luck

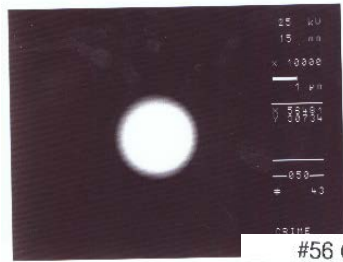


- 💣 **Pyrotechnic effect:** whistles, colored sparks, while spinning, four parts
- 💣 **Contents of unburned device:**
- 💣 **Automated GSR run of burned residue found:** none
- 💣 **Morphology BSE/SEM:** nothing significant
- 💣 **Contents of burned residue:** K, Cl K, C Cl, Al, Si K, S Fe, Cl, K Sr, Ba, Cl, K, Al, Mg
Sr, K, Cl, Mg Si, Ti, Fe, Al, Ca Ba, Al

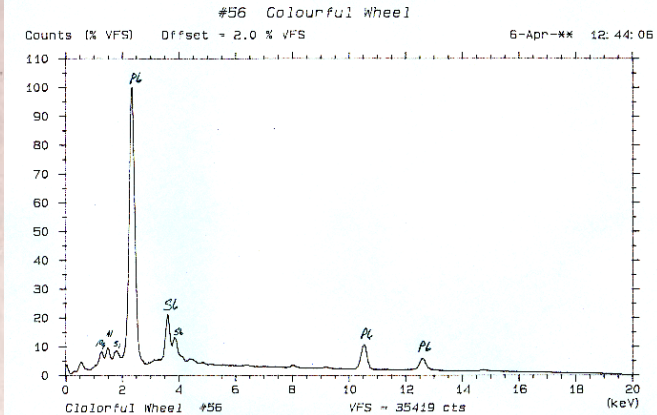
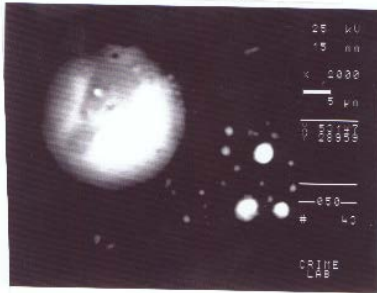


#56 Colourful Wheel

wheel



#56 Colourful Wheel

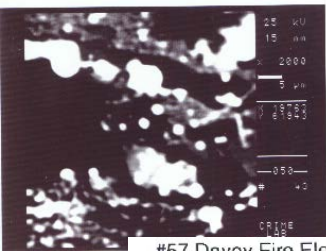


- ☛ **Pyrotechnic effect:** long lasting sparks from spinning wheel
- ☛ **Contents of unburned device:**
- ☛ **Automated GSR run of burned residue found:** none
- ☛ **Morphology BSE/SEM:** several small spheroid bright particles
- ☛ **Contents of burned residue:** Pb,Sb Pb,Sb,Fe Ba,Mg,Al,Si,K,Ca,Fe Ba,S,Al,Si,Ca,K
Ba,Al,S Si,Al,Mg,K,Ca,Fe,S K,Mg,Al,Si,S,Ba Pb,Sb,Mg,Al,Fe,Si Ba,Al,Mg Ba,Al

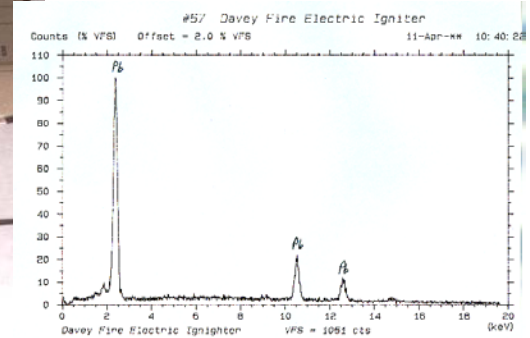
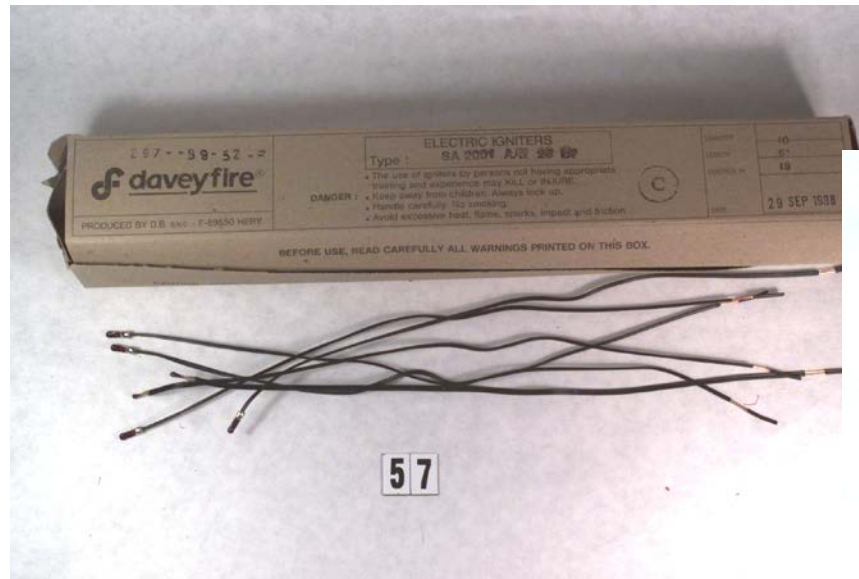
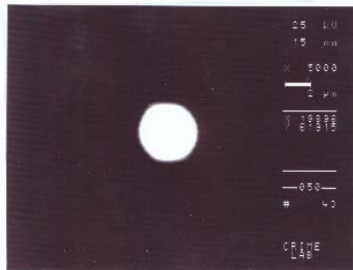


#57 Davey Fire Electric Igniter

igniter



#57 Davey Fire Electric Igniter



- ☼ **Pyrotechnic effect:** quick poof igniter end
- ☼ **Contents of unburned device:** orange=Pb red=P,Ca,Si brown=Pb,Mg
- ☼ **Automated GSR run of burned residue found:** none
- ☼ **Morphology BSE/SEM:** many small 5 um bright spheroid particles
- ☼ **Contents of burned residue:** Pb Pb Pb Pb

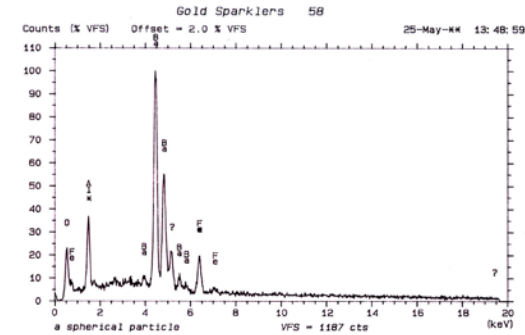
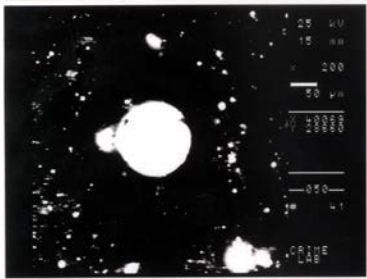


#58 Gold Sparklers

sparkler



GOLD SPARKLER 58

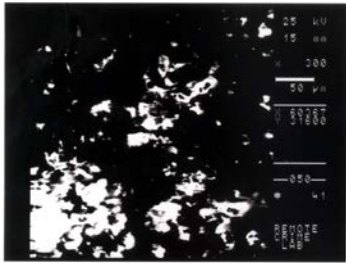


- 🔥 **Pyrotechnic Effect:** sparks emit from hand held metal stick
- 🔥 **Contents of unburned device:** gray = Al, Ba, Fe, Si, Cl, K
- 🔥 **Automated GSR run of burned residue found:** Ba particles
- 🔥 **Morphology BSE/SEM:** numerous spheroid particles of all sizes
- 🔥 **Contents of burned residue:** Ba, Al Fe Fe, Al Ba, Al Ba, Al, Fe Fe

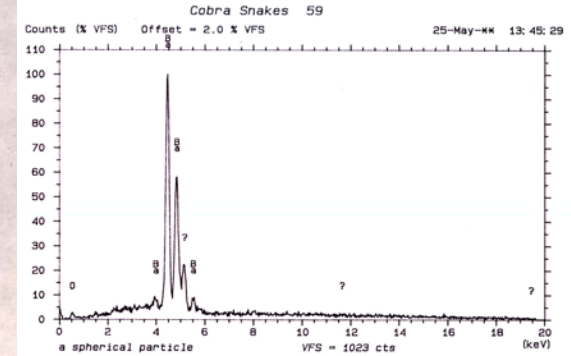
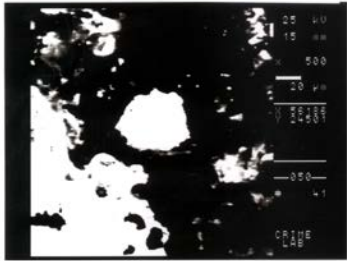


#59 Cobra Black Snake

snake



COBRA SNAKE 59



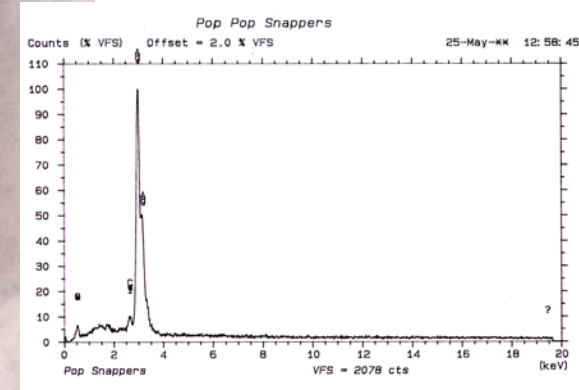
- 💣 **Pyrotechnic effect:** compressed black tablet burns at surface to leaves long trail of snake-like soot
- 💣 **Contents of unburned device:** black = Ba,S,As,Ca Si
- 💣 **Automated GSR run of burned residue found:** Ba particles
- 💣 **Morphology BSE/SEM:** many bright not round particles
- 💣 **Contents of burned residue:** Ba Ba,S



#60 Pop Pop Snappers

snap

POP SNAPPERS 60



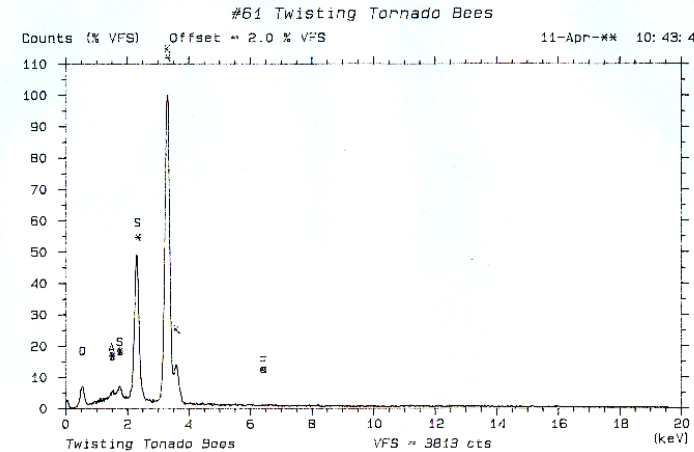
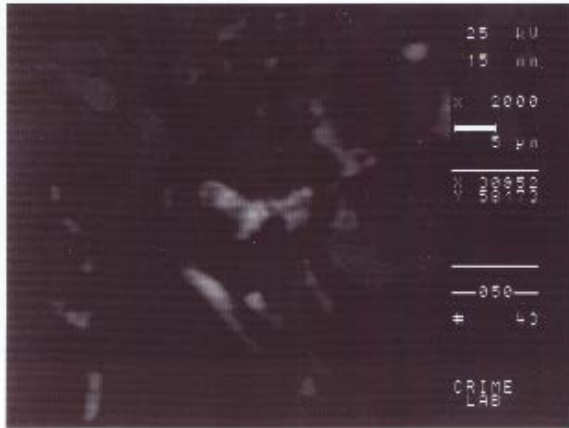
- 💣 **Pyrotechnic effect:** small pop on contact with ground
- 💣 **Contents of unburned device:** rock = Si,Al,Ag,K,Fe,S
- 💣 **Automated GSR run of burned residue found:** none
- 💣 **Morphology BSE/SEM:** can find 1um round particles
- 💣 **Contents of burned residue:** Ag,Cl Ag,Al,Si,Cl,Fe Ag



#61 Twisting Tornado

ground spinner

#61 Twisting Tornado Bees



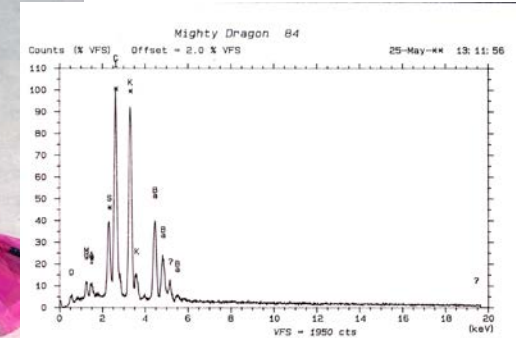
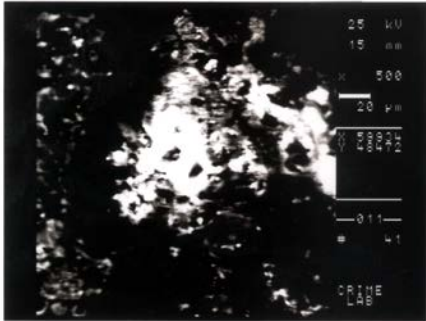
- 💣 **Pyrotechnic effect:** spins and sparks, can jump into air in any direction
- 💣 **Contents of unburned device:** yellow=Si,Al,K,Fe,Ti,Mg gray=Al,K,Mg,Si,Fe,Zn
clear=Si,Al,K,Ca black3=K,Si black2=K black1=K,S,Al,Si
- 💣 **Automated GSR run of burned residue found:** none
- 💣 **Morphology BSE/SEM:** none
- 💣 **Contents of burned residue:** K,S,Si,Al K,S,Si,Al,Fe K,S Al,Si,K,Fe Si,Al,Fe Al,S,K



#62 The Mighty Dragon

ground animal

MIGHTY DRAGON 62



62

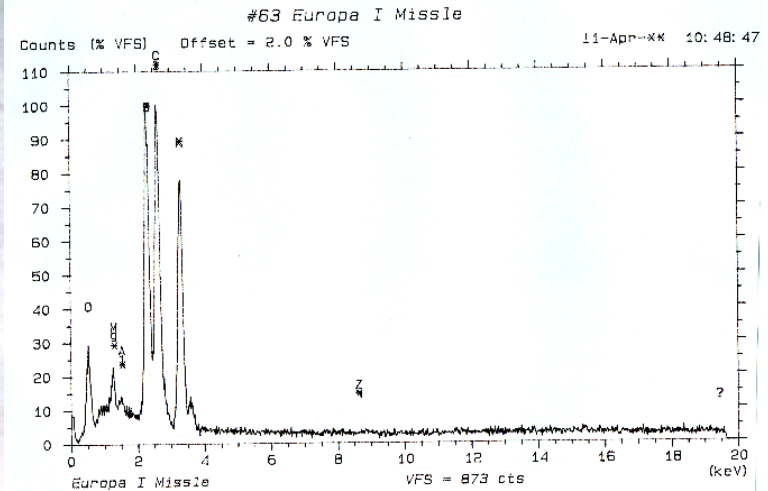
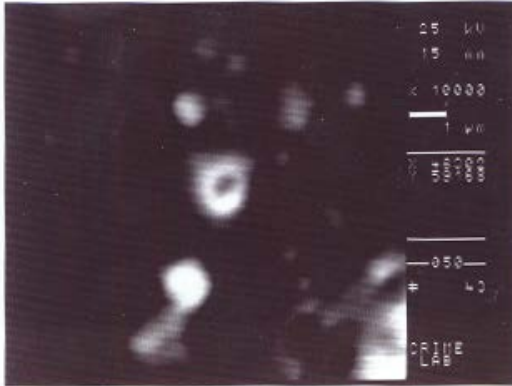
- 🔥 **Pyrotechnic effect:** bright sparks and flame with red and green mixed in while moving
- 🔥 **Contents of unburned device:** gray1 = K, Cl, Ti, Si, Mg, Al, Fe white1 = Mg, Si, Cl, Ca, K, Al, Fe
gray2 = K, Cl, Mg, Al, Si
- 🔥 **Automated GSR run of burned residue found:** none
- 🔥 **Morphology BSE/SEM:** bright masses
- 🔥 **Contents of burned residue:** Cl, K, Ba, S, Al, Mg Al, Ba, Cl, Mg, K Si, Cl, K Cl, K Ba, S, Cl, K
Ba, Al, S, Cl, K Pb, Cl, K Ba, Al Ba, Mg, Al, Cl, K



#63 Europa I Missile

rocket

#63 Europa I Missile

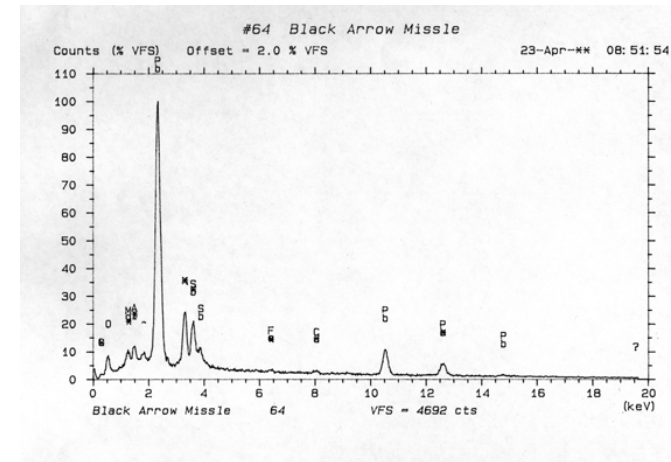
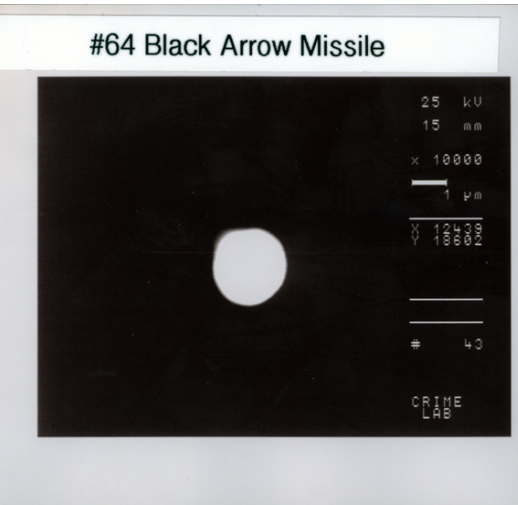


- 💣 **Pyrotechnic effect:** flies extremely high and explodes with shower of sparks
- 💣 **Contents of unburned device:** off-white=Al,Si,K,Ca,Fe,Ti,Cu,Zn gray3=Al,S,Pb,Cl,K,Fe
gray2=K,S,Mg,Al,Si,Ba gray1=S,K,Mg,Al,K,Ba black=S,K,Si
beige=Mg,Cl,Al,Si,K,Ti
- 💣 **Automated GSR run of burned residue found:** none
- 💣 **Morphology BSE/SEM:** few 1-5 um round particles
- 💣 **Contents of burned residue:** Ca,Mg,S,Cl,Si Cl,Mg,K,S,Ba Cl,K,S,Mg,Al S,K Pb,Sb,K
Ba,K,Al



#64 Black Arrow Missile

rocket

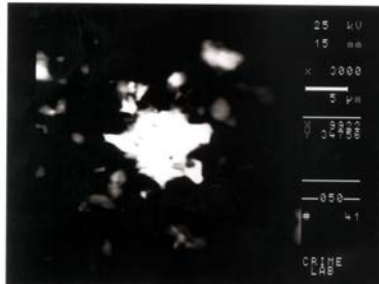


- ☛ **Pyrotechnic effect:** flies high and explodes with shower of sparks
- ☛ **Contents of unburned device:**
- ☛ **Automated GSR run of burned residue found:** can find Sb, Pb
- ☛ **Morphology BSE/SEM:** several small spheroid particles
- ☛ **Contents of burned residue:** Pb,K,Sb,Mg,Al Ba,Mg,Al,K,S K,S Ba,S,Al,Mg Pb,K,Si,Mg
Ba,S,K Ba,Al Ba,Al,Mg,S,K K,Pb

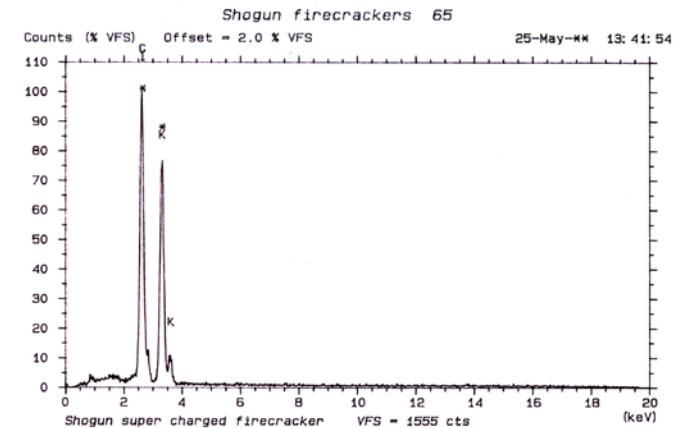
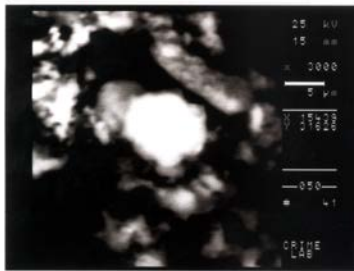


#65 Shogun Super Charged Flash-light Firecrackers

firecracker



SHOGUN 65



💣 **Pyrotechnic effect:** loud explosion

💣 **Contents of unburned device:** off-white = Mg,Cl,Ca,Si,Al,S silver = Al,Cl,K,Si,Mg,S

💣 **Automated GSR run of burned residue found:** none

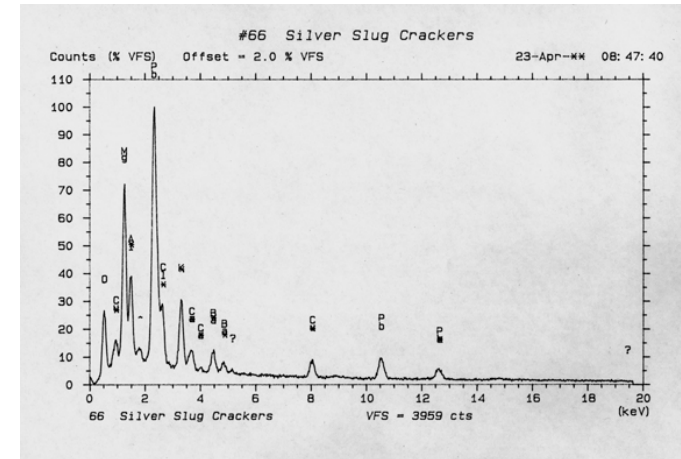
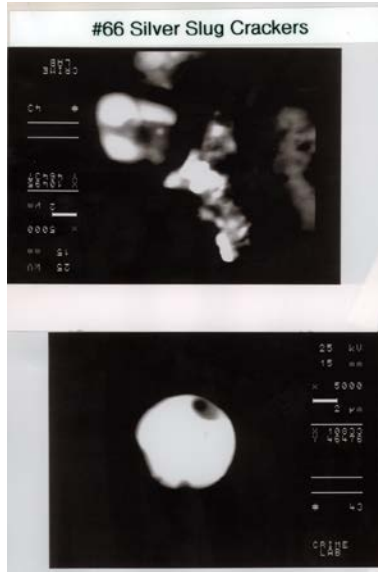
💣 **Morphology BSE/SEM:** many bright not round particles

💣 **Contents of burned residue:** Ca,Si Al,Si K,Cl K,Cl,S,Ca Al Al,K,Cl K,Cl,Al,Si,S



#66 Silver Slug Cracker

firecracker



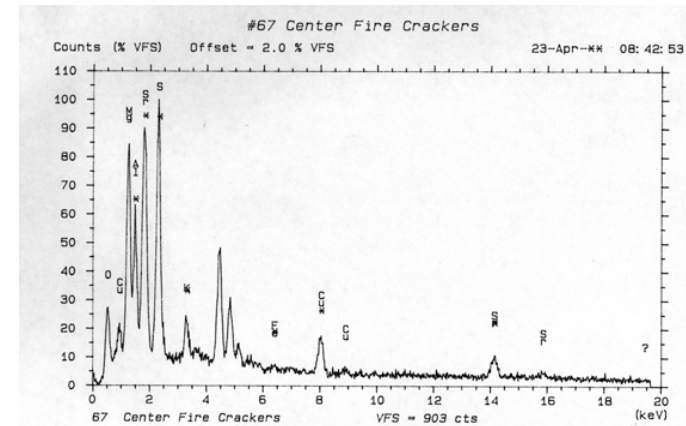
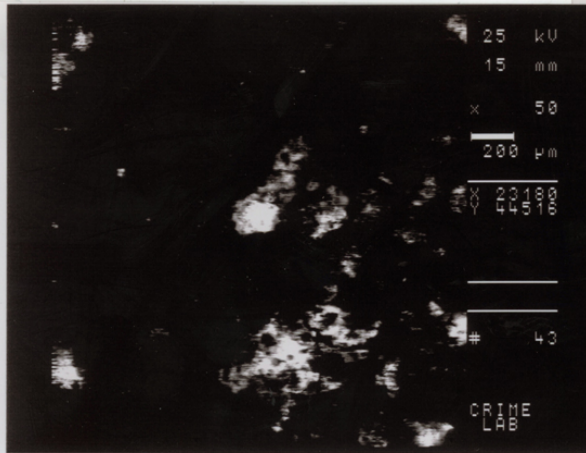
- 💣 **Pyrotechnic effect:** no more than a firecracker
- 💣 **Contents of unburned device:** red=Mg,Cl,Si off-white=Mg,Si,Cl gray2=K,Si,Cl
gray1=Al,Mg,Ba brown2=Cl,Mg,Sr,K,Al brown1-Mg,Al,Pb,Cu,K
- 💣 **Automated GSR run of burned residue found:** some Ba,Pb
- 💣 **Morphology BSE/SEM:** few spheroid particles
- 💣 **Contents of burned residue:** Pb,Mg,Al,K,Ca,Ba,Cu Pb,K,Mg Ba,Al,Mg,S,Ca
K,S,Cl,Mg,Si,Al Mg,Si,Cl K,Ca,Si,Mg,Al,S Ca,Si Al,Ca,Pb K,Ca,Cl Ba,K,S Pb,K,Cu
Pb,Ca,Cu Cu,Pb,Ca,K Mg,Cl K,Ca



#67 Center Fire Cracker

firecracker

#67 Center Fire Crackers



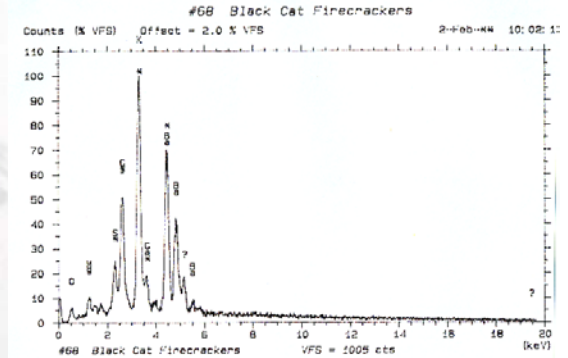
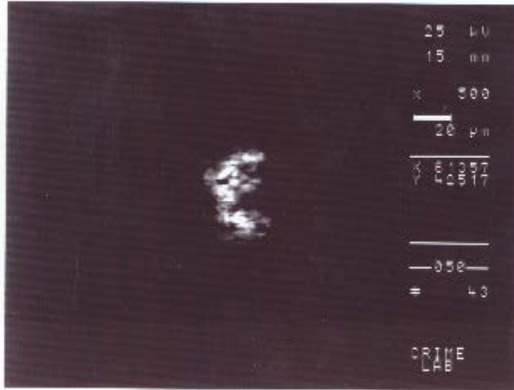
- 💣 **Pyrotechnic effect:** no more than a firecracker
- 💣 **Contents of unburned device:** black=K,Si off-white=Mg,Si,Cl,Ca red=Mg,Si,Cl,Ca
- 💣 **Automated GSR run of burned residue found:** none
- 💣 **Morphology BSE/SEM:** nothing significant
- 💣 **Contents of burned residue:** S,Sr,Al,Cu,K,Mg,Fe,Ba Cu,Al K,Cl Mg,Al Al,Sr,Cu,S,K
K,Cl,Ca,Si Cu,S Mg,Si Cu,Ba Ma,Al,S,K,Cu Cu,K,S,Si,Mg,Al Ba,K,S Cu,S,Mg,Al



#68 Black Cat Firecracker

firecracker

#68 Black Cat Firecracker

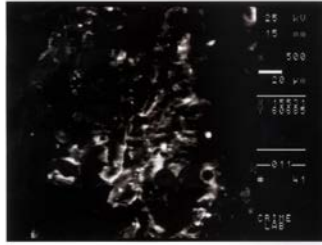


- 💣 **Pyrotechnic effect:** loud explosion
- 💣 **Contents of unburned device:** orange=Si,Al,Fe,K,Ca,Ti,Cl off-white=Mg,Ca,Si,Cl,Ca,Al
gray=Al,Cl,K,Si,Mg black=S,Si,Al,Mg,K,Fe
- 💣 **Automated GSR run of burned residue found:** none
- 💣 **Morphology BSE/SEM:** can find 5um spheroid particles
- 💣 **Contents of burned residue:** Al,Cl,K Cl,K Mg,Cl,Al,Si Mg,Cl,K,Ca Ba,Si,Cl,K
Si,Ca,Al,K Al,Si,K,Cl,Fe,S Ca,Mg,Al,Si,Cl,K,S,Fe
K,Ba,Cl,S,Ca,Mg,Al,Si Sn,Fe,Al,Cl

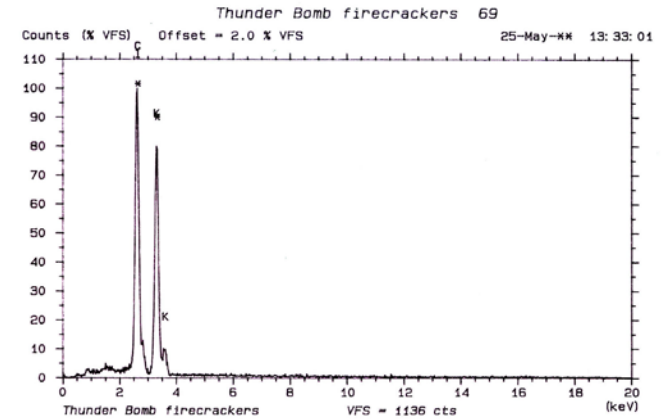


#69 Thunder Bomb

firecracker



THUNDER BOMB 69



💣 **Pyrotechnic effect:** loud explosion

💣 **Contents of unburned device:** gray2 = Al,Cl,K,Si,S,Ca,Fe gray1 = Al,Cl,K,S,Fe

💣 **Automated GSR run of burned residue found:** none

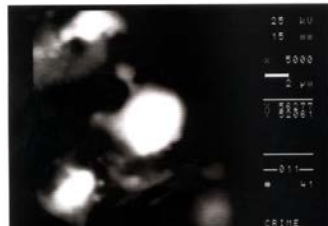
💣 **Morphology BSE/SEM:** can find 2um spheroid particles

💣 **Contents of burned residue:** K,Cl K,Cl,Si,Mg,Al Cl,K Cl,K,Al,Si Ba,S Fe,Si
Ca,S Cl,K,Ca Cl,K,Mg Fe

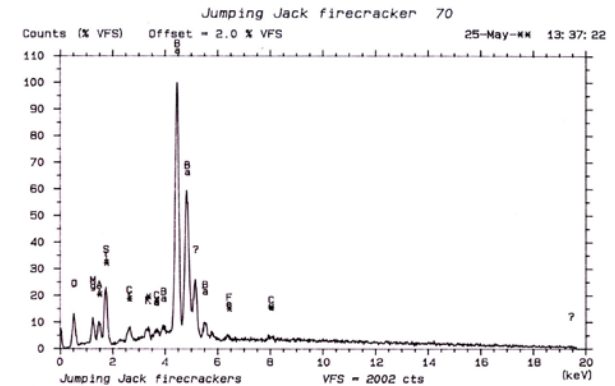
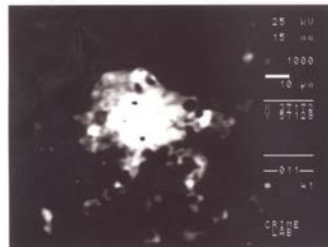


#70 Jumping Jack Firecracker

small firecracker



JUMPING JACK 70

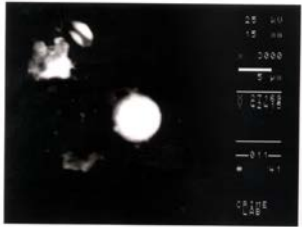


- 💣 **Pyrotechnic effect:** string of ground explosions
- 💣 **Contents of unburned device:** black1 = K,Si,Al,Mg,Cl,S,Fe red = Sr,Al,Mg,Cl,K,Fe
gray = Mg,Al,Ba,Cl,K orange = Si,Al,Fe,Mg,K,Ba,Cl white = Mg,Ca,Cl,Si
- 💣 **Automated GSR run of burned residue found:** none
- 💣 **Morphology BSE/SEM:** bright masses
- 💣 **Contents of burned residue:** Sr,Cl,K,S Sr,Mg,Al,Si,Cl,K,Ba,Cu Cl,Ba,Si,S,Ca,Mg,K
Al,Ba,Mg,K,Ca,Si K,Cl,S,Si Ba Ba,Ca,Sr,Cl Cl,K,Ba Ba,Ca,Cl,Mg,Al
Ba,Mg,Al,Si,Cl,K Ba,Cl,K Si,Ca

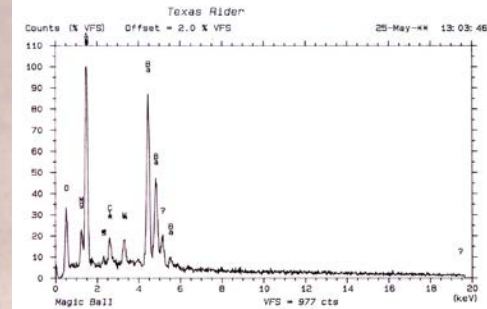


#71 Texas Rider

ground animal



TEXAS RIDER 71



- 💣 **Pyrotechnic effect:** red and green sparks then whistle out of back then red and green sparks then whistles
- 💣 **Contents of unburned device:** orange = S,K,Mg,Na,Cl,Si white = K,Cl,Mg,Si
black = K,Cl,Si,Al,Mg off-white = Sr,Al,Cl,K,Mg gray = Ti,Al,K
- 💣 **Automated GSR run of burned residue found:** none
- 💣 **Morphology BSE/SEM:** can find 100um round particles
- 💣 **Contents of burned residue:** Cl,K Al,Ba,Mg,S,Cl,K Cl,K Ba,Cl,K,Al Pb,Si,K,Ca
Pb,Bi Ba Zn

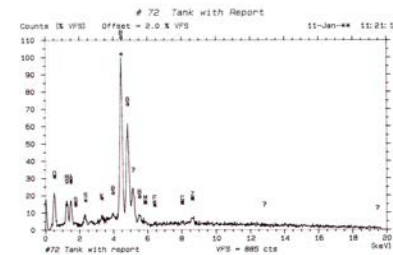
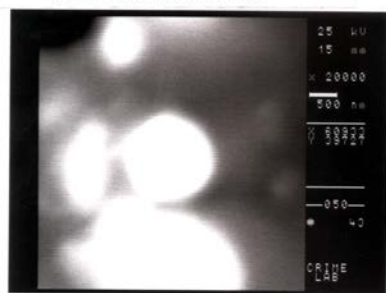


#72 Tank With Report

ground device



#72 Tank with Report

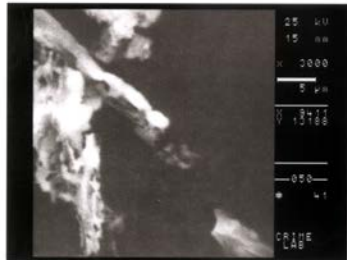


- 💣 **Pyrotechnic effect:** shoots sparks and moves on ground then shoots an explosion
- 💣 **Contents of unburned device:** red=Mg,Al,Si,Cl,Ca,Fe off-white=Mg,Al,Si,S,Cl,K,Ca
gray1=Mg,Al,Si,Cl,K gray2=Zn,Mg,Al,Si,S,Ba black1=S,K black2=Mg,Si,S,Cl,K
- 💣 **Automated GSR run of burned residue found:** none
- 💣 **Morphology BSE/SEM:** can find 1um round
- 💣 **Contents of burned residue:** Cl,K Mg,Al,Ba,Cu,Zn,S,K,Fe Ba,Mg,Al,S,Cl,K Ba,K,S,Cl,Si
Bs,K,Cl Ba,S K,Cl,Al

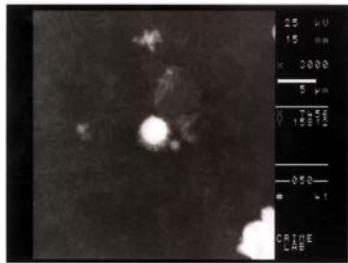
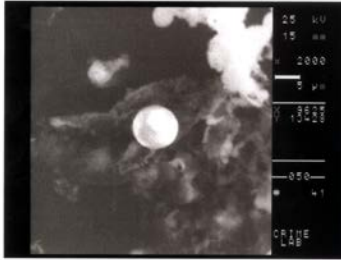


#73 Shogun Ground Spinning Flower

ground spinner



Shogun Ground Blooming Flower 73



💣 **Pyrotechnic effect:** green and yellow ground spinner

💣 **Contents of unburned device:** gray = Mg, Ba, Al, Cl, K, Si Sr orange = Si, Al, Fe, K, Ti
black = K, S, Si, Al, Mg, Fe

💣 **Automated GSR run of burned residue found:** none

💣 **Morphology BSE/SEM:** can find 4µm round particles

💣 **Contents of burned residue:** K, Cl Ba, Si, Al, S, Cl, Ca, Fe, Sr K, S, Cl, Al, Si Al, Sr, Fe, Cu
Al, Ba, Ca, Sr, K Cl, K, Ba, Al, Sr Al, Ba, Cl, K, Mg

- Pyrotechnic effect:** ground spinner that crackles

- Contents of unburned device:** orange = Si,Al,Fe,K,Ti,Mg,S gray1 = Si,Cl,K,Al,Ba,Mg,S,Fe
 gray2 = S,K,Si,Al,Mg,Ba,Fe gray3 = Sr,Mg,Al,Cl,K,Ba,Zn black = K,Si,S,Al,Mg,Cl,Fe
 orange center=Pb,Mg,Cu,Al,K,Si,Fe

- Automated GSR run of burned residue found:** some Pb, Ba particles

- Morphology BSE/SEM:** 1um spheroid particles

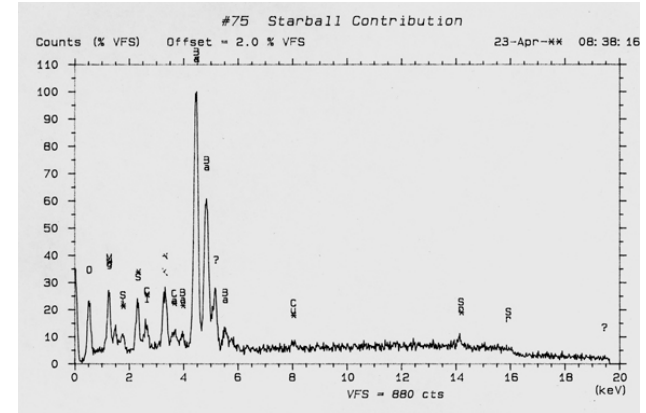
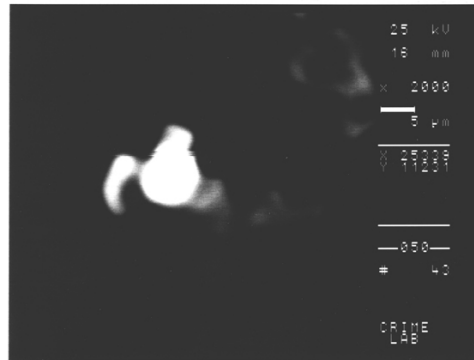
- Contents of burned residue:** Pb,Ba,Mg,Al,Si,K,Cu Pb,Cu,K Pb,Cu,K,Mg,Si,Fe
 K,Cl,S,Ba, Si,Al Cl,Ba,Si,Al,S,K Ba,Al,Cu,Fe,Sr Ba,Si Cl,K,S Si,K,Pb,Cu Ba,K
 Cu,Ba,Al,S,Cl Pb,Cu,K Ba,K,Cl Al,Si,S,Cl,K



#75 Starball Contribution

ground spinner

#75 Starball Contribution



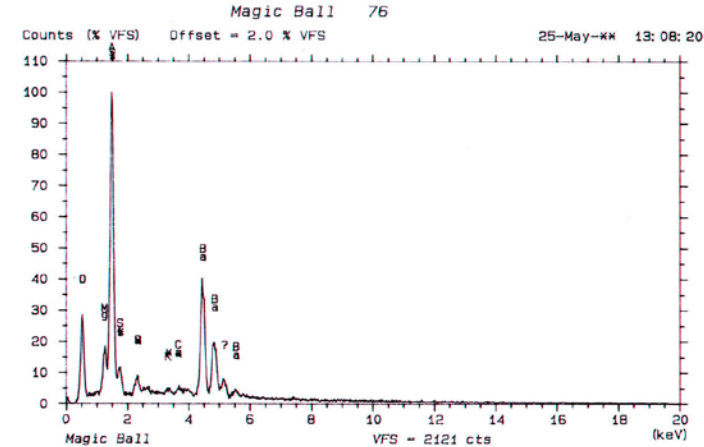
- 💣 **Pyrotechnic effect:** spins on ground and emits sparks, can jump
- 💣 **Contents of unburned device:** orange=Si,Al,Fe,K,Ti,Mg gray=Mg,Al,Sr,Cl,K,Ca
black2=K,Si,Al,S black=K,Mg,Al,Si,S,Ca,Cl,Ba
- 💣 **Automated GSR run of burned residue found:** none
- 💣 **Morphology BSE/SEM:** nothing significant
- 💣 **Contents of burned residue:** K,S,Ba,Si,Mg,Al K,S K,S,Si,Al,Mg Ba,Mg,S
Ba,Mg,K,S,Cl,Si,Al,Sr K,Cl Mg,Al,S,K Ba,K Ba,Al Si,S,K,Ca K,S,Si Sr,K Ca,K,Si
Al,Si,K,Fe Si Mg,Al,Sr,K,Ca,Ba K,S,Cl



#76 Magic Ball Fireworks

ground spinner

MAGIC BALL 76

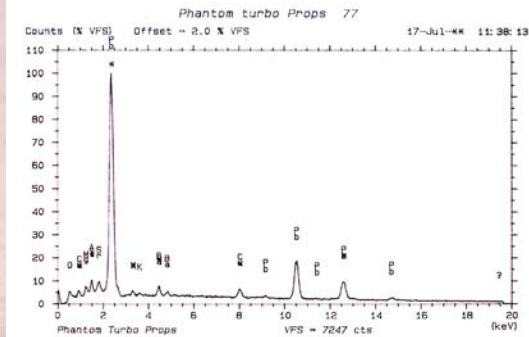


- Pyrotechnic effect:** spins on ground emitting sparks and at end a balloon fills with gas
- Contents of unburned device:** gray = Mg,Al,Cl,K,Ba,Si,S,Sb,Fe orange = Si,Al,Fe,K,Ti,S,Cl
black1 = K,S,Si,Al,Mg,Fe black2 = Cl,K beige = Si,A,Fe,Ti
- Automated GSR run of burned residue found:** none
- Morphology BSE/SEM:** 100um bright round particle
- Contents of burned residue:** Cl,K Al,Ba,Mg,Si,S,K,Ca K,Cl Cl,K,Si Fe,Si,Al,K
Fe Si Al,Si S,Ca,Ba Si,S,Cl,K,Ba Al,Si,S,Cl,K,Ca,Ba Sb,S



#77 Phantom Turbo Props

ground spinner



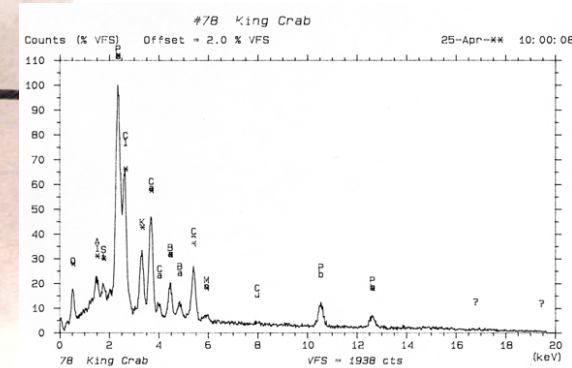
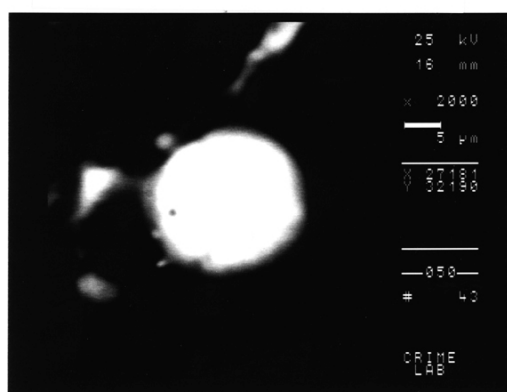
- ☛ **Pyrotechnic effect:**
- ☛ **Contents of unburned device:** gray = Mg,Al,Cl,K,Ba off-white = Mg,Cl,Ca,Si,Al,Ba,K,S,
black = K,Cl,S,Si,Mg,Al off-white1 = Mg,Ca,Cl,Si,Al silver = Ba
- ☛ **Automated GSR run of burned residue found:** some Pb, Ba particles
- ☛ **Morphology BSE/SEM:** can find 2um spheroid particles
- ☛ **Contents of burned residue:** Pb,Cl,K,Mg,Ba,Cu Ba,S Pb,Ba,Mg,Al,Cu Ba,Mg,Al
Pb,Ba,K,Ca,Cl,Mg,Al,Si,Cu Pb,K,Ca,Cl Pb,Cl,K,Cu Pb,Cl,K,Cu,Al
Mg,Al,K,Ca,Ba,Cu,Pb



#78 King Crab

ground animal

#78 King Crab



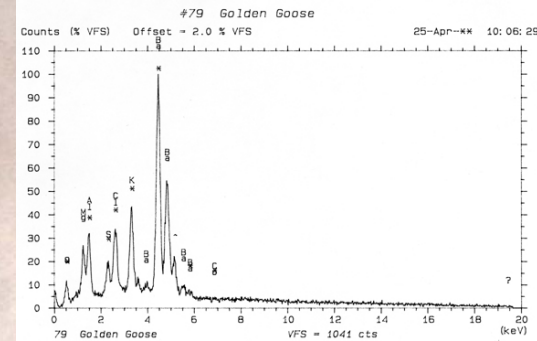
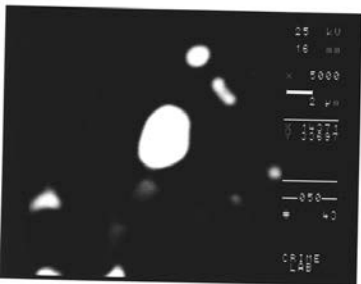
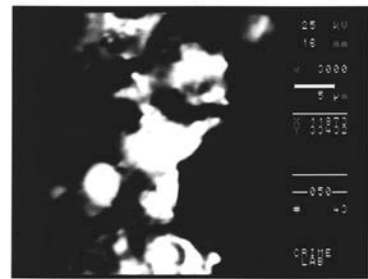
- 💣 **Pyrotechnic effect**
- 💣 **Contents of unburned device:** white = Mg,Si,Cl,K black = K gray = K,Cl gold flake = Ti,Al
- 💣 **Automated GSR run of burned residue found:** some Pb Ba
- 💣 **Morphology BSE/SEM:** some 5 um bright spheroid particles
- 💣 **Contents of burned residue:** Ba,Mg,Al,K,Cu,Cl,S Ca,Si,Al,K,Cl K,S,Si,Al Cl,K
Pb,Cl,Ca,K,Cr,Ba,Al,Si Pb,K,Ca,Cl Ba,K,S Mg,Cl,Ca Ba,S,Al,Mg,Cl,K,Cu Ba,Cu
Al,Ba,K,Cl,S Mg, Al,Cl,K,Ba,Cu,Pb Al,K,Cl Ba,Cu Ma,Al,K,Ba,Cu



#79 Golden Goose

ground animal

#79 Golden Goose

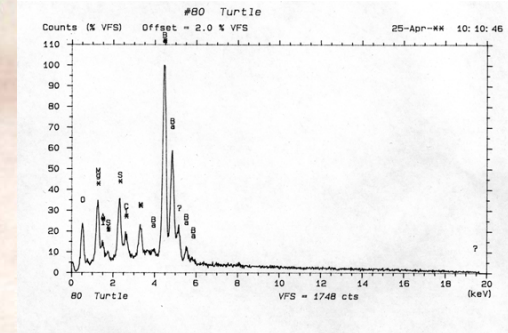
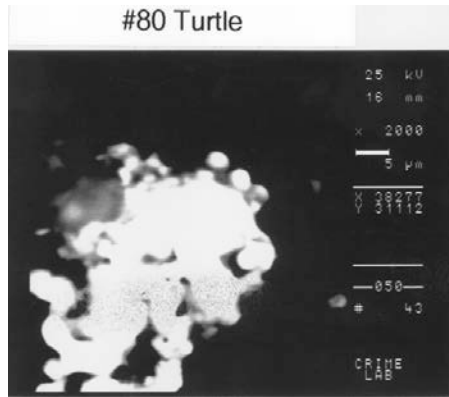


- 💣 **Pyrotechnic effect:** bright white flames then red and green sparks then whistles then yellow sparks out open wings
- 💣 **Contents of unburned device:** orange = Si, Al, Fe, K, Ti grey = Mg, Sr, Cl, Al, K, Ti, black = K, Si, Mg, Al
- 💣 **Automated GSR run of burned residue found:** none
- 💣 **Morphology BSE/SEM:** nothing significant
- 💣 **Contents of burned residue:** Cl, K Ba, Mg, Al, K, Cl, S Cl, Ba, K, S, Al, Mg Cl, K, Al, Si Sr, Cl, K
Ba, Al, S, Cl, K Ba, Al Ba, Cl, Mg, Al K, S



#80 Turtle

ground animal



- 🔥 **Pyrotechnic effect:** red and green flaming balls out back then crackles out the front
- 🔥 **Contents of unburned device:** gray tube = Al,K,Ba,Mg,Si,S black tube = K,Cl,Mg,Al,Si,Ti
black tube 2 = K,Si,S white = Mg,Si,Cl gray tube chunk = Al,Mg,K,Ba,S white tube = Mg,Si,Cl,K
gray stars in black = Al,Ba,Mg black tube = K
- 🔥 **Automated GSR run of burned residue found:** none
- 🔥 **Morphology BSE/SEM:** nothing significant
- 🔥 **Contents of burned residue:** K,Cl Ca,K,Cl,Si,Al Ba,S,Mg,Al,K,Cl,Si Cl,K Ba,Al,K,Cl
Ca,K,Cl,Si,Al Ba,Al,Mg,K,Cl Ba,S,Cl,K Ba,Al,Mg Cl,K

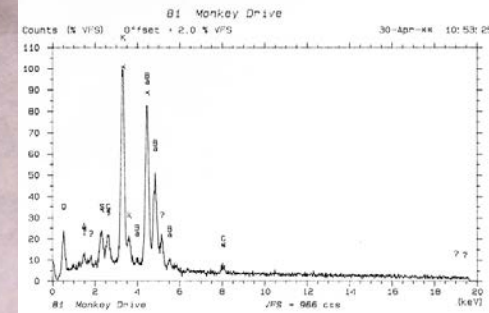
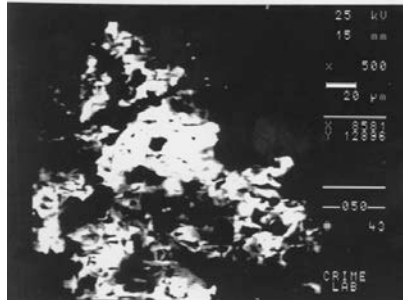


#81 Monkey Drive

ground animal



81 MONKEY DRIVE



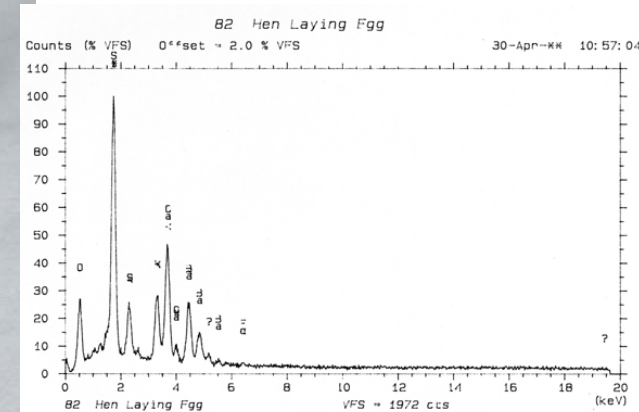
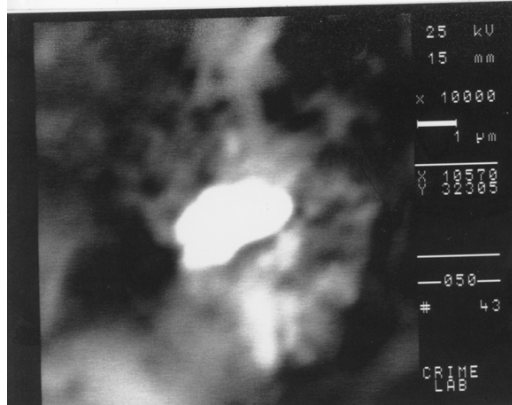
- ☛ **Pyrotechnic effect:**
- ☛ **Contents of unburned device:** white = Mg, Si, Ca pellet = Si, Al, K, Fe, Ti orange = Si, Al, Fe, K, Ti
black/white = Ca, Cl, Sr, K, Al, Mg black star = Cl, K, Mg, Ba, Al, S, Si black star 2 = K, Ba, Cl, Al black = K
- ☛ **Automated GSR run of burned residue found:** none
- ☛ **Morphology BSE/SEM:** masses
- ☛ **Contents of burned residue:** K, Ba, Cl, S, Al, Cu K, Si, Cl, S, Al Ca K, Cl Al, Si, Fe
Ba, K, Al, Mg, S Ba, K, Al, S, Cl Ba, Ca, K, Fe, Al, S, Cl



#82 Hen Laying Egg

ground animal

82 HEN LAYING EGG



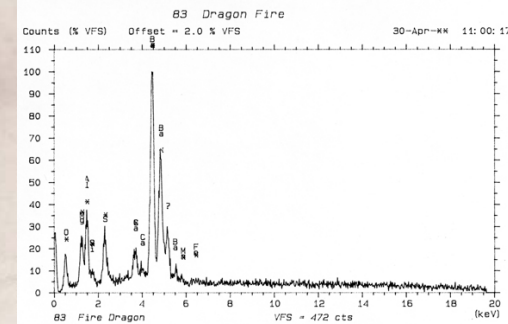
💣 **Pyrotechnic effect:** sparks and red and green balls then whistle

💣 **Contents of unburned device:** silver = Al, K, Fe black = K, Al, Si red star = Cl, K, Mg, Sr, Al
white = K, Cl white 2 = Mg, Si, Cl

💣 **Automated GSR run of burned residue found:** none

💣 **Morphology BSE/SEM:** no round particles

💣 **Contents of burned residue:** Si, K, Ca, Mg, Al Si, K, Cl Mn, K, Si, Ca, S, Zn, Na K, Ca, Si, Fe, S
K, Cl Ca, Cu, K, Fe, Si, S Ba, Ca, P, S Ba, K, S, Al, Si Zn, Ca, K, S Zn, Ba, S Ca, Si, Fe Ba, Ca, Zn

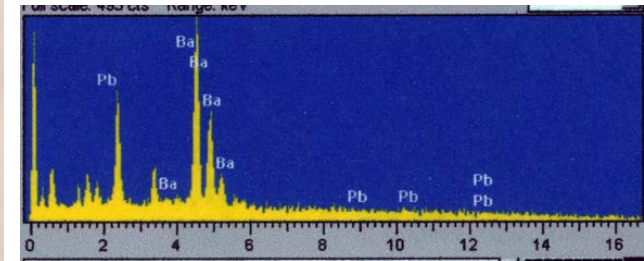
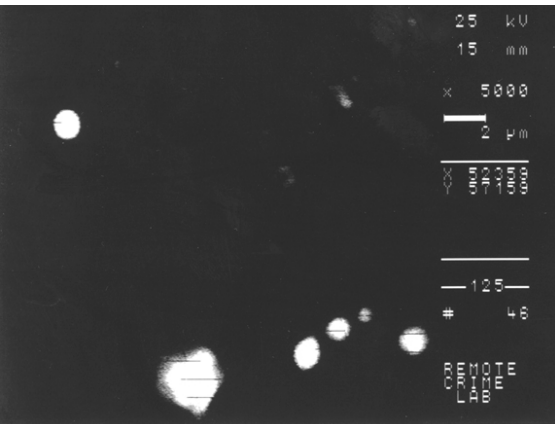


- 💣 **Pyrotechnic effect:**very bright sparks with green flame - then whistle explosion
- 💣 **Contents of unburned device:**gray = Mg,Al,Ti orange/gray = Si,Al,Ca,K,Fe orange = Cl,K,Si,Al,Ba
white = Cl,K
- 💣 **Automated GSR run of burned residue found:**none
- 💣 **Morphology BSE/SEM:**can find 5um round particles
- 💣 **Contents of burned residue:**Ba,K,Cl,Al,Mg Ca,S,Ba,Si,Mg,Al,Fe Ba,S,Al,Mg,Cl,K K,Cl
Al,Mg,Ba,S Ba,Al,Cu



#84 Signal Flare

Strobe



- 💣 **Pyrotechnic effect:** very bright strobe
- 💣 **Contents of unburned device:** silver = Mg,Al,Ba dark gray = Ba,K,S,Mg,Al
- 💣 **Automated GSR run of burned residue found:** none
- 💣 **Morphology BSE/SEM:** many 1um spheroid particles
- 💣 **Contents of burned residue:** Ba,Mg,Al,S Ba,Mg,Al,S,K Ba,Al,Mg,Ca,Si,Fe Ba,Al

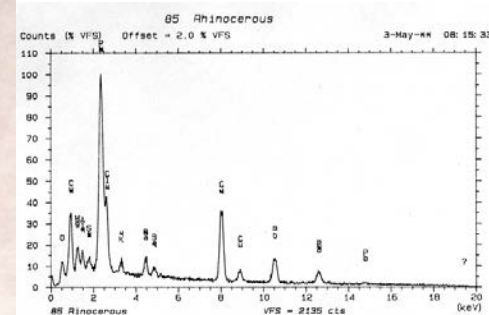
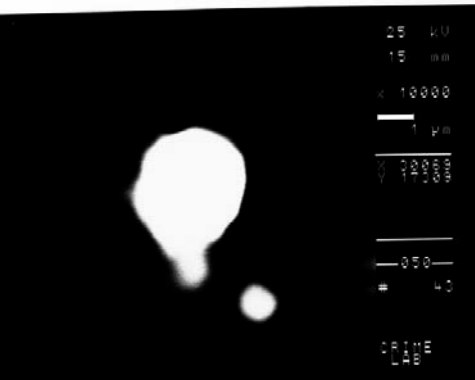


#85 Rhinoceros

ground animal



85 Rhinoceros

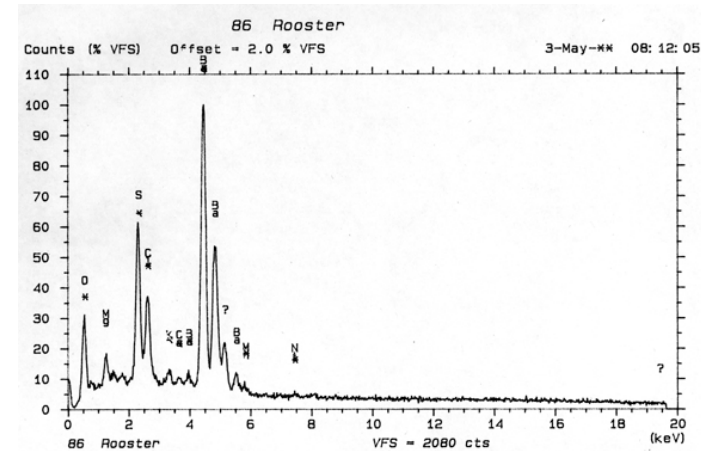
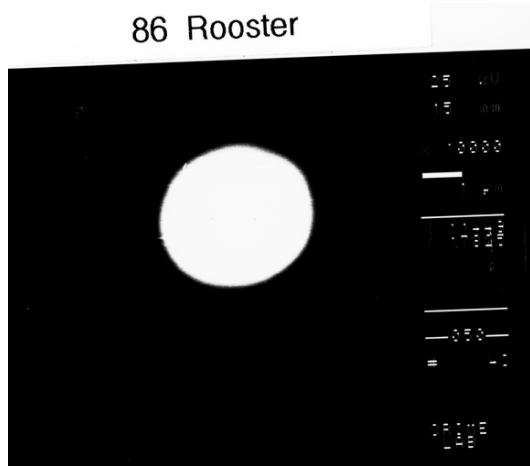


- 🔥 **Pyrotechnic effect:** very bright red flame with sparks then crackles then bright yellow flame out front with ending whistle shot
- 🔥 **Contents of unburned device:** grey = Cl, K, Al, Mg white = K, Cl, Si orange = Si, Al, Fe, K
gray = Sr, Mg, Al, K, Cl black = K, Si, Al, S light gray = Cl, K, Sr, Mg, Al dark gray = Cl, K, Mg, Al, S
- 🔥 **Automated GSR run of burned residue found:** some Pb, Ba particles
- 🔥 **Morphology BSE/SEM:** plenty of 1 to 10um spheroid particles
- 🔥 **Contents of burned residue:** Pb, Cu, K, Ba, Mg, Al, Cl, Si Ba, Mg, Al, Cl, K Cu, Ba, Cl, Mg, Al K, Cl
Ba, Cl, S, Mg, Al, K Pb, K, Cu, Mg, Al K, Cl, Al Cu, Al, Pb Ba, Pb, Cl, K, Mg, Al, Cu Ba, S, Cl, Al, Si
Sr, Mg, Al, Pb, Cu



#86 Rooster

ground animal



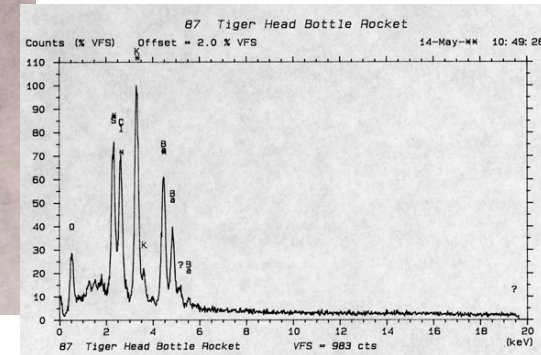
- 💣 **Pyrotechnic effect:** crackles
- 💣 **Contents of unburned device:** black 2x = Mg, Cl, Ba, Al, S, K black = K, Mg, Al, Ba, S, Cl white = Mg, Ca, Si, Cl white = K, Cl black x = Mg, S, Ba, Al, Si
- 💣 **Automated GSR run of burned residue found:** none
- 💣 **Morphology BSE/SEM:** can find 5um spheroid particles
- 💣 **Contents of burned residue:** Ba, Sr, Ma, Al, S, K, Cl, Ca Ba, S, Cl, Mg, K, Ca, Al K, Cl
Ba, K, Cl, Sr Ba, K, Cl



#87 Tiger Head Red Meteor Rocket

bottle rocket

87 Tiger Head Bottle Rocket

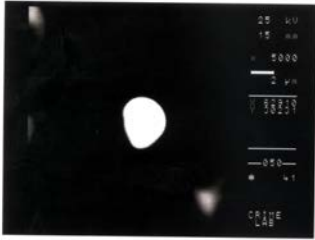


- 💣 **Pyrotechnic effect:** shoots up with red pop
- 💣 **Contents of unburned device:** white=K,Cl,Al,Mg orange=Si,Al,Fe,K,Mg,Ti
off-white=Mg,Al,Cl,Ba,S,K,Si,Ca gray=Mg,Al,Cl,K
black2=S,K,Mg,Al,Cl,Ba,Si,K black1=K,Si,Mg,Al,S,Cl
- 💣 **Automated GSR run of burned residue found:** none
- 💣 **Morphology BSE/SEM:** can find 5um spheroid particles
- 💣 **Contents of burned residue:** K,S,Si,Al Ba,K Sr,Al,K,S,Mg K,Cl K,S,Cl,Ba K,S,Cl
Ba,Sr,Si,K,S Al,K,Fe,Ce Sr,Al,K

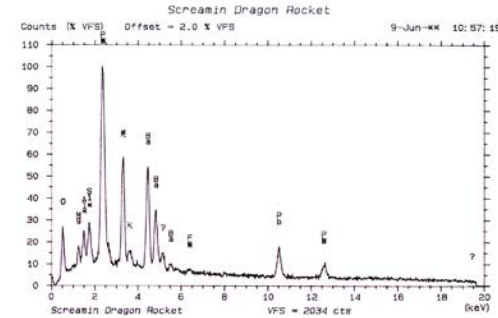
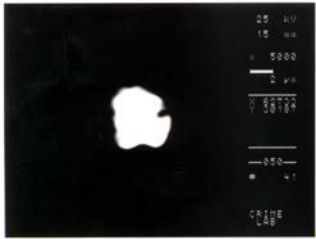


#88 Screaming Dragon Rocket

bottle rocket



SCREAMIN DRAGON ROCKET 88



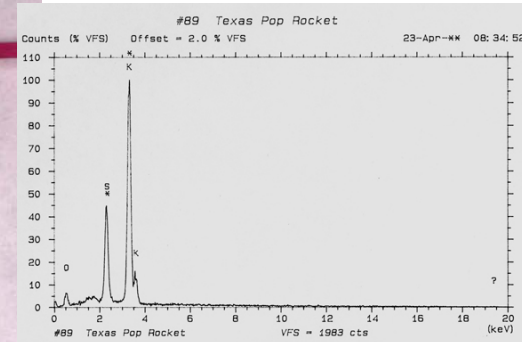
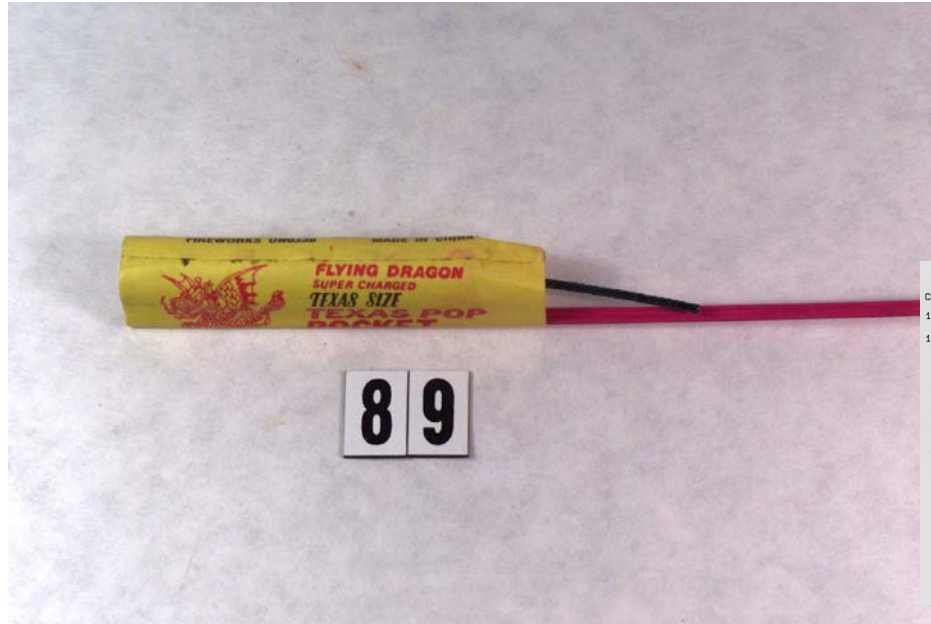
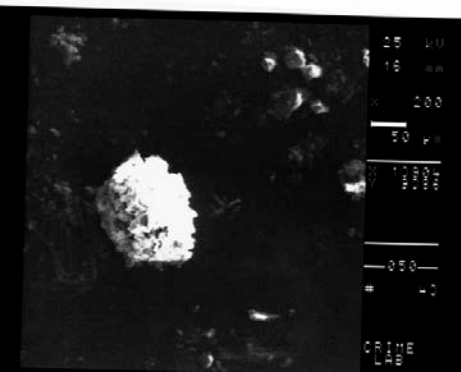
- 🔥 **Pyrotechnic effect:** whistles loud on the way up then sparkles
- 🔥 **Contents of unburned device:** black2 = K, Mg, Al, S, Cl, Si white = K, Cl black/orange ball = K, Mg, Al, Pb, Cu, Ti, Si black1 = K, S, Mg, Si, Ba
- 🔥 **Automated GSR run of burned residue found:** some Pb, Ba particles
- 🔥 **Morphology BSE/SEM:** small bright not very round particles
- 🔥 **Contents of burned residue:** K, Ba, S, Cl, Al, Mg K, S, Cl, Ba, Al, Mg S, Cu, K K, Cl
Pb, Cu, K Pb, Al, Cl, K, Cu Ba, K, Pb Cl, K, Ba, Pb Ba, K, Cl, Cu, Pb Ba, K
Pb, Ca Pb, K, Cu, Cl Ba, S, K Pb, K K, S, Cl, Cu, Pb Cl, K Pb, K, Cu



#89 Texas Pop Rocket

bottle rocket

#89 Texas Pop Rocket



- 💣 **Pyrotechnic effect:** does not go very high then pops loud
- 💣 **Contents of unburned device:** orange = Si,Al,Fe,K,Cl,S gray = Al,Cl,K,Mg,Si
white = Mg,Si,Cl,Ca,S,Al,K,Fe black = K,S,Si
- 💣 **Automated GSR run of burned residue found:** none
- 💣 **Morphology BSE/SEM:** nothing significant
- 💣 **Contents of burned residue:** K,S Si,Al,K,Fe K,Si,Al K,Cl Cu,Zn K,S,Sr,Al
Ti,Fe,K,S Ba,K,Al

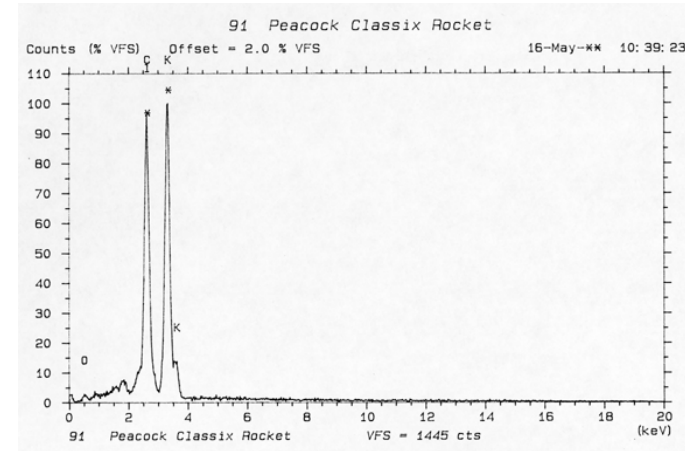
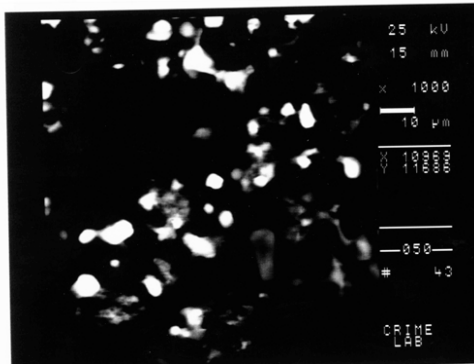
- 💣 **Pyrotechnic effect:** shoots up very high and explodes
- 💣 **Contents of unburned device:** white=Mg,Cl,Ca,Si,S,Al orange=Si,Al,Fe,K,Si,Mg,Ti
gray=Al,S,Cl,K,Sb,Mg,Si,Fe,Mn,Zn,Pb black2=K,Si,Al,S,Mg
black=K,S,Si,Al,Mg
- 💣 **Automated GSR run of burned residue found:**Pb,Sb
- 💣 **Morphology BSE/SEM:** 2um spheroid
- 💣 **Contents of burned residue:** Pb,Sb,Al,Si,K,Fe Al,K,Fe,Pb K,S Mg,Cl,Ca,Si



#91 Peacock Classicx Rocket

bottle rocket

91 PEACOCK CLASSIX ROCKET

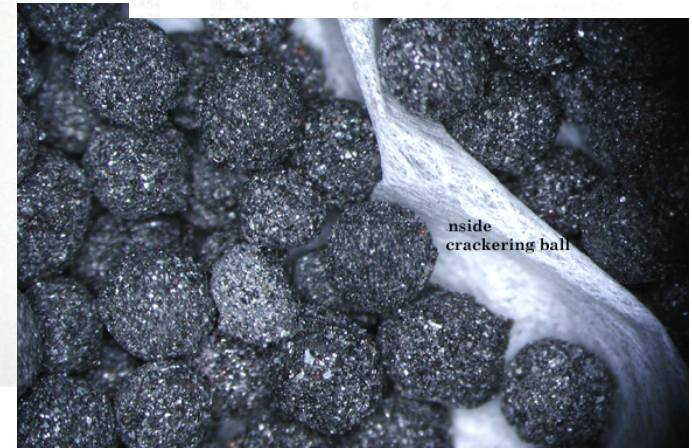
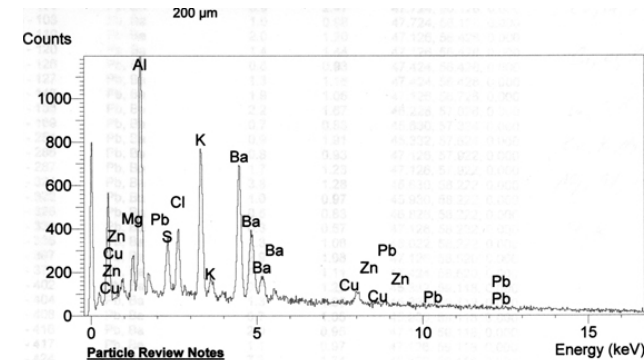
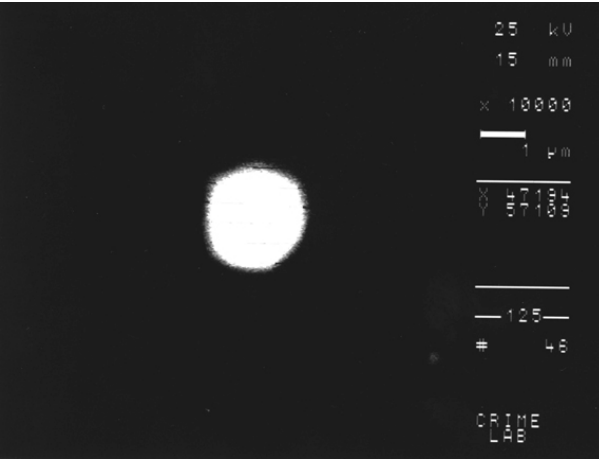


- 💣 **Pyrotechnic effect:** shoots up and different colored balls pop out
- 💣 **Contents of unburned device:** gray=K, Cl, S, Si, Al, Cu black2=S, Cl, K, Cu
black1=K, S, Si, Mg beige=Si, Al, K, Ti, Fe
- 💣 **Automated GSR run of burned residue found:** none
- 💣 **Morphology BSE/SEM:** not good
- 💣 **Contents of burned residue:** K, Cl, S, Si, Al Ca, K, Si, Cl, Al K, Cl Cl, K K, Cl, S Cl, K, Ca
Mg, Al, Sr, Cl, K, Ca Sr, Al, Ba, Ca, K, S, Cl K, Ca, Al



#92 Crackling Cactus

Crackering Ball



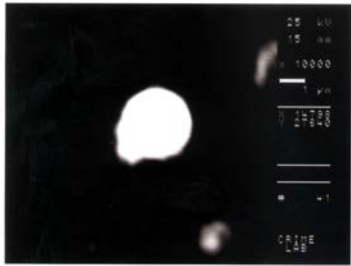
inside crackling ball

- ☼ **Pyrotechnic effect:** fountain with four crackering balls
- ☼ **Contents of unburned device:** black=K,Si,S silver ball = Cl,K,Mg,Al,Cu,Sr crackering ball
outside = K,Mg,Al,S,Cl inside crackering ball = Mg,Al,Cu,K,S,Cl
- ☼ **Automated GSR run of burned residue found:** Pb,Ba
- ☼ **Morphology BSE/SEM:** 2um spheroid particles
- ☼ **Contents of burned residue:** Ba,Cl,K,Mg,Al Ba,Si,K,Cl,S Cu,Ba,Mg,Al,Cl,K,S Sr,Cl,K
Ba,S,K,Cl,Cu,Mg,Al Cu,K,Mg,Al,Cl,S Mg,Al,Pb,K Pb,K

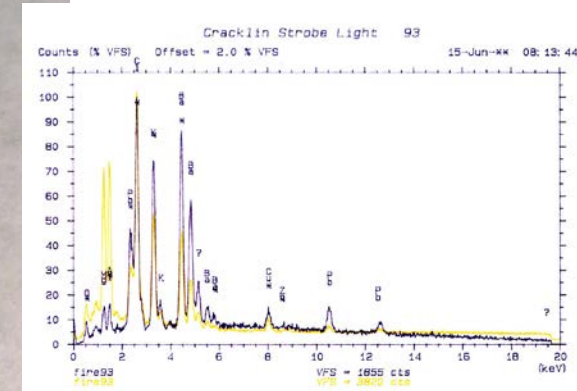
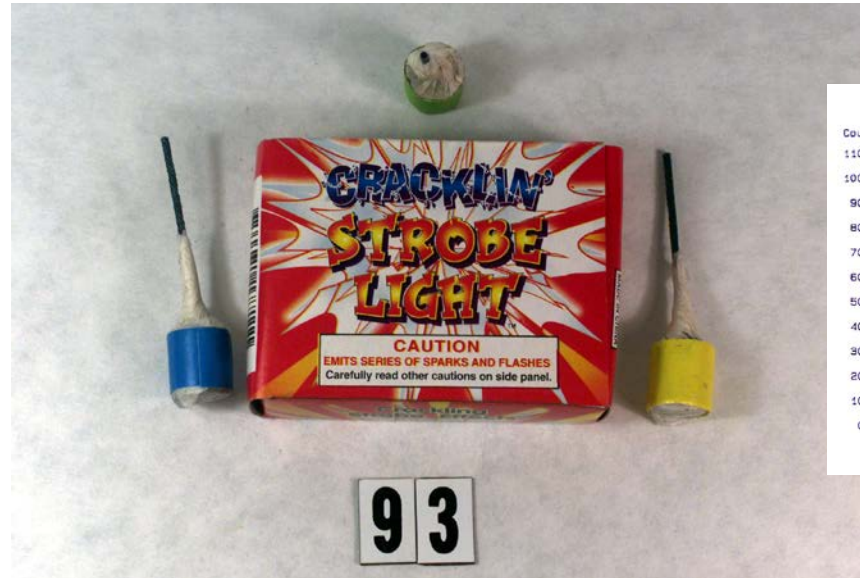
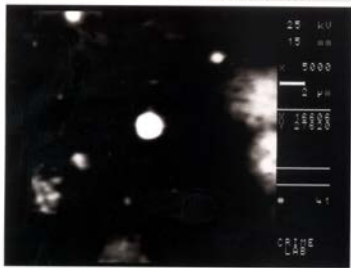


#93 Cracklin' Strobe Light

strobe



CRACKLIN STROBE LIGHT 93

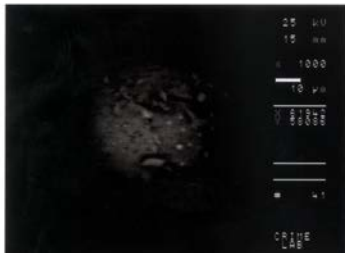


- 💣 **Pyrotechnic effect:** long lasting bright pulses and crackle sparks
- 💣 **Contents of unburned device:** gray = Pb,S,Cl,K,Cu,Mg,Al brick red balls=Al,Mg,Pb,Cu,Si,Fe
black ball = Cl,K,Ba,S,Mg,Al
- 💣 **Automated GSR run of burned residue found:** some Pb, Ba particles
- 💣 **Morphology BSE/SEM:** can find 2um spheroid particles
- 💣 **Contents of burned residue:** Ba,Cl,Mg,Al,K,Cu,Pb Ba,Cl,Al Cl,K,Pb,Ba,Mg,Al,Cu
Cl,Mg,Al,K,Ba,Pb,Cu Pb,Cu,Cl,K Ba,Cl,K Al,Cl,K,Ba,Pb Ba,Cl,K
Mg,Al,Cl,K,Ba Ba,Mg,Al,Cl

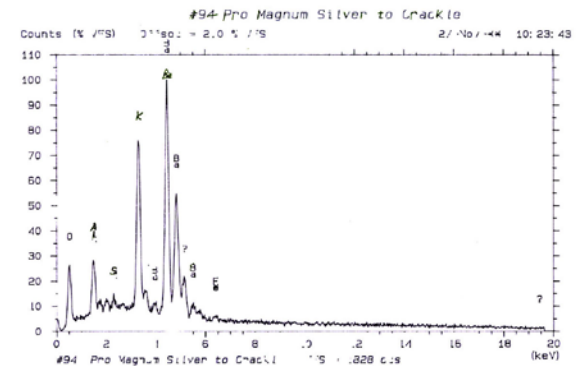


#94 Pro Magnum Silver to Crackle.. et al

mortar



94 Pro Magnum Silver to Crackle



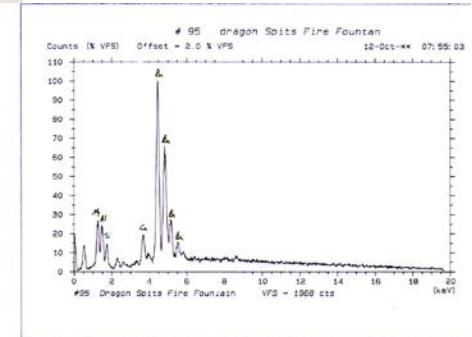
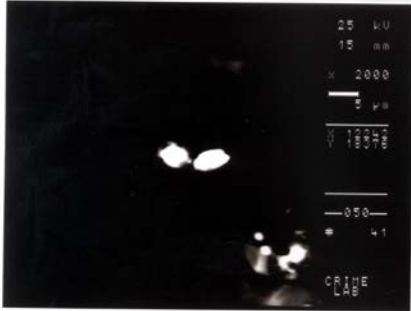
- 💣 **Pyrotechnic effect:** shoots up and explodes in sky silver streams that then crackle as they fall
- 💣 **Contents of unburned device:** beige=Si,K gray1=Si,S,K gray2=Cu,Mg,Al,S,Cl,K,Ba
gray3=Mg,Al,Si,S,Cl,K
- 💣 **Automated GSR run of burned residue found:** none
- 💣 **Morphology BSE/SEM:** large bright particles not round
- 💣 **Contents of burned residue:** K,Cl Ba,Al,K S,K Al,Si,S K,Ca



#95 Dragon Spits Fire fountain

ground animal

#95 Dragon Spits Fire Fountain

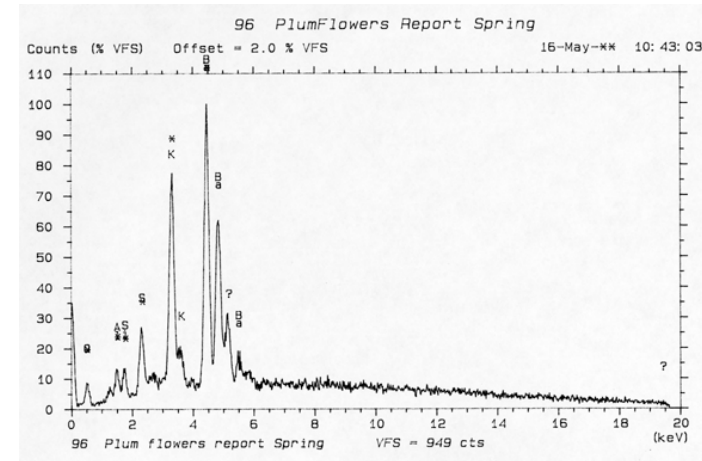
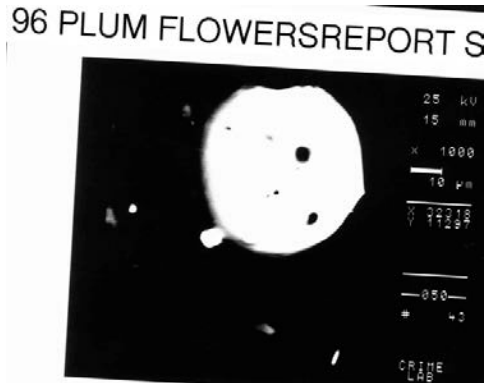


- 💣 **Pyrotechnic effect:** very bright white fountain then whistles
- 💣 **Contents of unburned device:** black = K,S,Ai,Si,Fe gray1 = Al,K,Mg,Ba,Si,S,Cl,Fe,Cu,Zn
off-white = Mg,Si,Cl,Ca,K,S,Fe orange = Si,Al,Ca,K,Fe,Ti,S white = Mg,Si,Cl,Ca,S,Fe,K
- 💣 **Automated GSR run of burned residue found:** couple of Ba particles
- 💣 **Morphology BSE/SEM:** can find some 3-5um round particles
- 💣 **Contents of burned residue:** Ba,Mg,Al,Si,Ca Ba,S,Mg,Al Al,Fe Ba,Al,S,Cl Ba,Al,S,Ca
Ba,S Ba,Si,Al,Ca Al,Ba,Mg Ba,Ca,Zn,Si,S Ba,Al,Mg,S Fe Si,K Pb,K,Ca K
K,Mg,Si,Ba



#96 Plum Flowers Report Spring

fountain

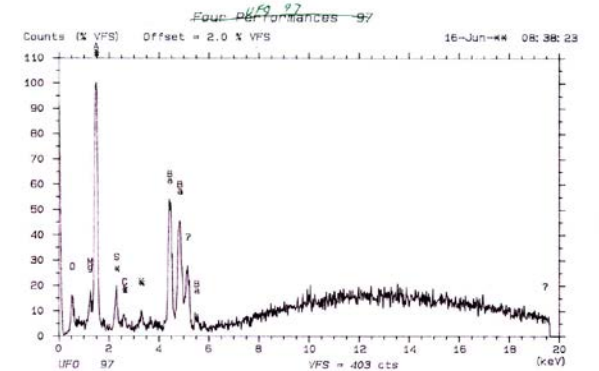
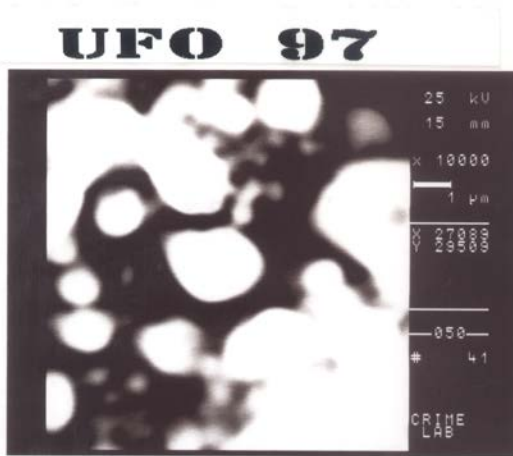


- 🔥 **Pyrotechnic effect:** emits sparks, flame, and some crackles
- 🔥 **Contents of unburned device:** gray=K,Cl,S,Si,Al,Cu black2=S,Cl,K,Cu black1=K,S,Si,Mg
beige=Si,Al,K,Ti,Fe
- 🔥 **Automated GSR run of burned residue found:** none
- 🔥 **Morphology BSE/SEM:** 1-5um spheroid particles
- 🔥 **Contents of burned residue:** Ba,K,S,Si,Al,Mg,Fe Si,Al,Ca,S,K,Ti,Zn Ca,Si,Al,S,Ba,Zn
K,Ba Al,Si Ti,K,Ca,Fe Ba,K,S,Al Pb,K Ba,Zn,K,S,Si Si,Al,K,Fe K,S,Al Cl,K,Sr

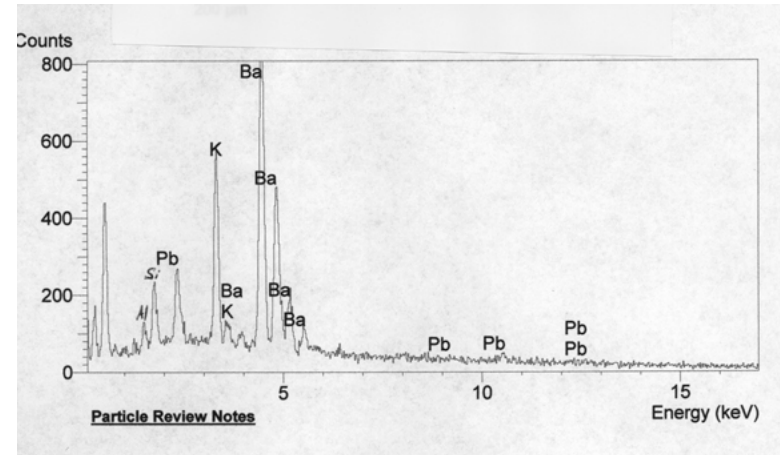


#97 UFO

ground spinner



- ☛ **Pyrotechnic effect:** whistles, spins, and flies up
- ☛ **Contents of unburned device:** white = K,Cl,Si,Mg off-white = Mg,Si,Cl,Ca,K,S,Al,Fe
orange = Si,Al,Fe,K,Mg,Ti,S off-white = Mg,Si,Cl,S,Al,Ca,Ba,K black = K,Mg,Al,S,Si,Zn
- ☛ **Automated GSR run of burned residue found:** none
- ☛ **Morphology BSE/SEM:** can find 1um round particles
- ☛ **Contents of burned residue:** K,S,Cl,Mg,Al Al,Ba,S,Mg Ba,Al,Mg,Ca Ba,Al,Mg,S,Ca
Ba,Cl,K Mg,Al,S,Cl,K Ba Ba,Ca,Al,K Ba,Si,Al,K,Ca,Cl,Mg Cl,K Ba,Mg,Al,S
Ba,Ca,Mg,Al,Si



- 💣 **Pyrotechnic effect:** gold and silver sparks then purple and gold fish ending in all colors - too cool!
- 💣 **Contents of unburned device:** orange=Si,Al,K,Ti,Fe gray3=Mg,Al,S,Ba,Si,Cu,K,Zn
gray2=Mg,Al,S,K,Si,Ba,Ca,Cu,Zn gray1=S,Mg,Al,Cu,Ba,K,Zn
black=K,Si,Ca,Mg,Al
- 💣 **Automated GSR run of burned residue found:** Pb,Ba
- 💣 **Morphology BSE/SEM:**can find 5um spheroid
- 💣 **Contents of burned residue:** K,Ba,Pb,Cu Ba,K,S Ba,K,S,Cu S,Ba,K Sr,K Fe,K
K,S,Cl,Cu,Pb Cu,S,K K,Cl,Cu K,S Ba,K,Pb,Si,Al

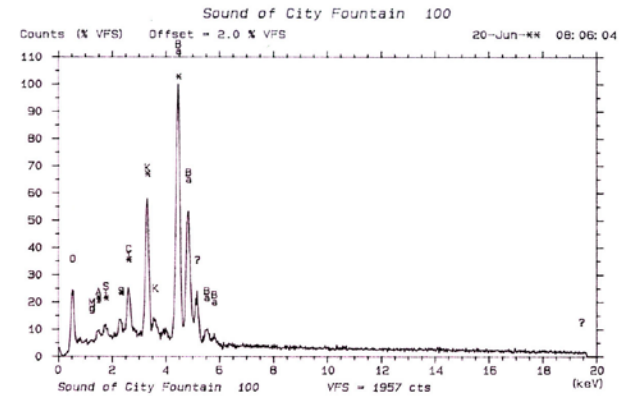
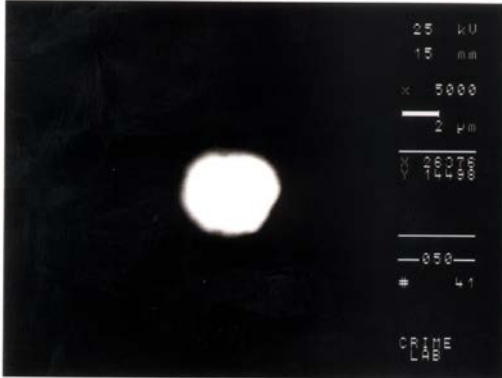
- 💣 **Pyrotechnic effect:** sparks
- 💣 **Contents of unburned device:** black3 = K,S,Si,Al,Fe gray = Mg,Al,Cl,Ba,K,S,Si
red = Si,Al,S,K,Cu,Zn black1 = K,Si,Al,S,Fe,Mg black2 = K,Si,Ca,Al,Mg,Na,Fe
orange = Si,Al,Fe,K,Ti,S
- 💣 **Automated GSR run of burned residue found:** none
- 💣 **Morphology BSE/SEM:** can find 5um bright not round particles
- 💣 **Contents of burned residue:** S,K K,Ba,Cl,S,Mg,Al K,Cl,S,Mg,Al Ba,K Ba,Al,K
Ba,K,S,Al Ba,Cl,K Cl,K S,K K,S,Cl Ba,Mg,Al,K



#100 Sound of City Fountain

fountain

SOUND OF CITY FOUNTAIN 100



💣 **Pyrotechnic effect:** loud whistle fountain

💣 **Contents of unburned device:** orange = Si, Al, Fe, K, Ti, Mg black = K, Cl, S, Si, Al, Mg
gray = Mg, Al, Cl, Ba, Ca, K, Na, Si white = K, Cl, S, Fe

💣 **Automated GSR run of burned residue found:** none

💣 **Morphology BSE/SEM:** can find 6um round particles

💣 **Contents of burned residue:** Ba, K, S, Mg, Al, Cl, Si K, Cl, Si, Al Al, Ba, Zn, Ca, Pb Ba, K
Ba, K, S Ba, Al, Cl, K, Ca Al, Ce, Ti, K Cl, K